

# Kindergarten Information Night 2025



**FULTONVALE**  
ELEMENTARY JUNIOR HIGH

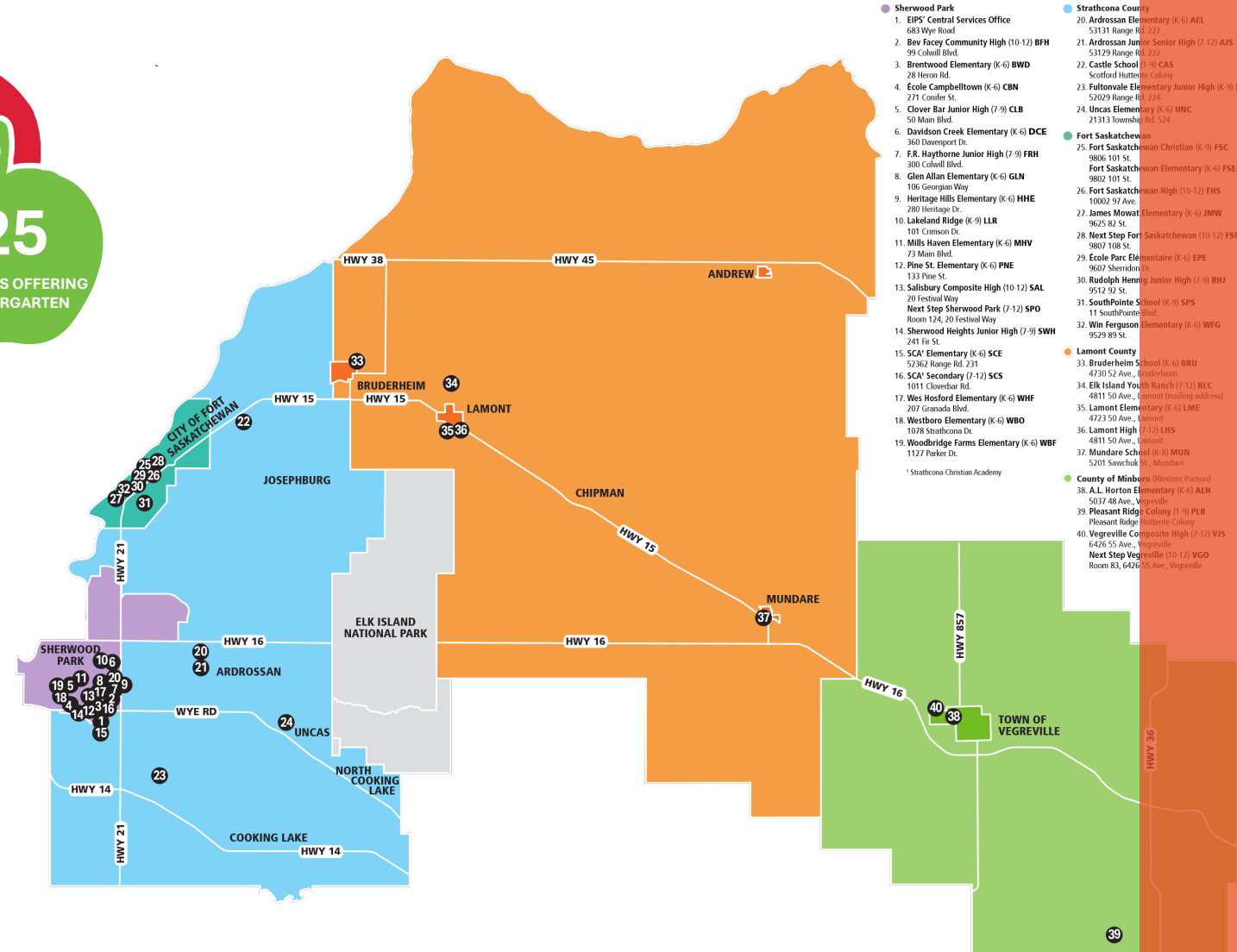
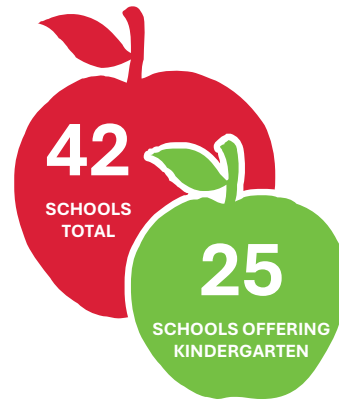


A teacher with blonde hair, wearing a black sleeveless top and black pants, is sitting on a wooden shelf in a classroom. She is holding an open book and reading to a group of children sitting on the floor. The children are seen from behind, wearing various clothing including a baseball cap, a green shirt, a blue and red jersey with 'McDAVID 97' on the back, a yellow shirt, a floral dress, and a green cap. The classroom has a whiteboard in the background, a potted plant, and shelves with books and toys. A book titled 'Don't Let the Pigeon Drive the Bus!' is visible on the shelf to the right. The text 'Welcome to KINDERGARTEN!' is overlaid in large white letters across the center of the image.

# Welcome to KINDERGARTEN!

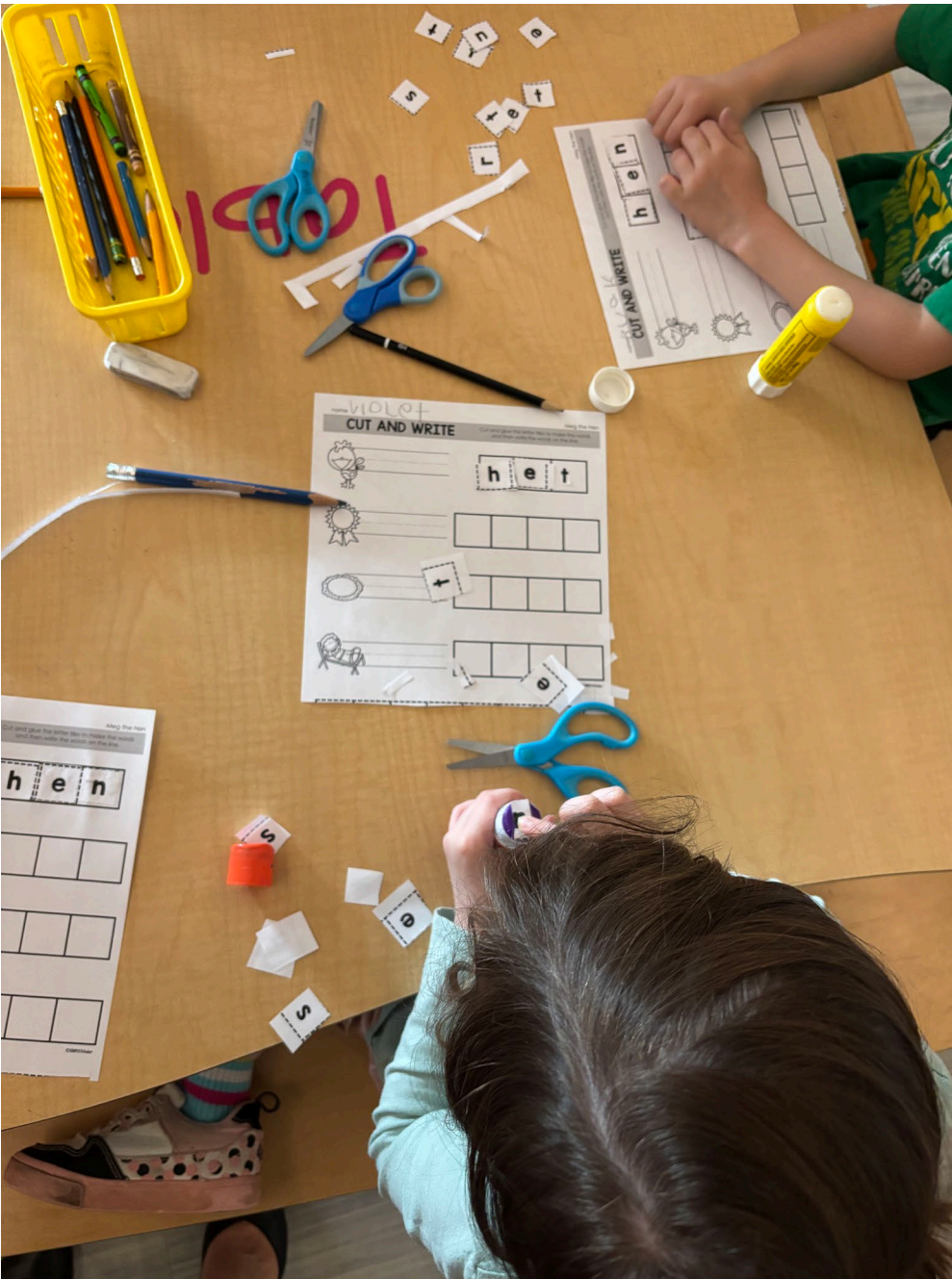
# Elk Island Public Schools (EIPS) serves:

- Sherwood Park
- Fort Saskatchewan
- Strathcona County
- Lamont County
- Western Portion of the County of Minburn



A high-angle photograph of two young children sitting at a light-colored wooden table. The child on the left has blonde hair and is wearing a black t-shirt with a colorful Marvel Comics graphic. The child on the right has reddish-brown hair and is wearing a white t-shirt with a blue and yellow graphic. They are both focused on playing with numerous small, 3D letter tiles scattered on the table. There are two small drawstring bags on the table: a blue one on the left and an orange one on the right, both with the text 'hand2 mind' printed on them. The blue bag is surrounded by blue letter tiles, and the orange bag is surrounded by orange letter tiles. Some red letter tiles are also visible in the upper right corner. The text 'Literacy-rich, play-based programming' is overlaid in white, bold font across the middle of the image.

Literacy-rich, play-based programming



# Curriculum Areas

- English Language Arts and Literature
- Mathematics
- Physical Education and Wellness
- Science
- Social Studies
- Fine Arts
- French Immersion Language Arts and Literature

# Kindergarten Curriculum

- New kindergarten curriculum implemented:
  - Mathematics (2022-23)
  - English Language Arts and Literature (2022-23)
  - Physical Education and Wellness (2022-23)
  - Science (2023-24)
  - French Immersion Language Arts and Literature (2023-24)
- Future kindergarten curriculum implementation:
  - Social Studies (anticipated 2025-26)
  - Fine Arts (to be determined)

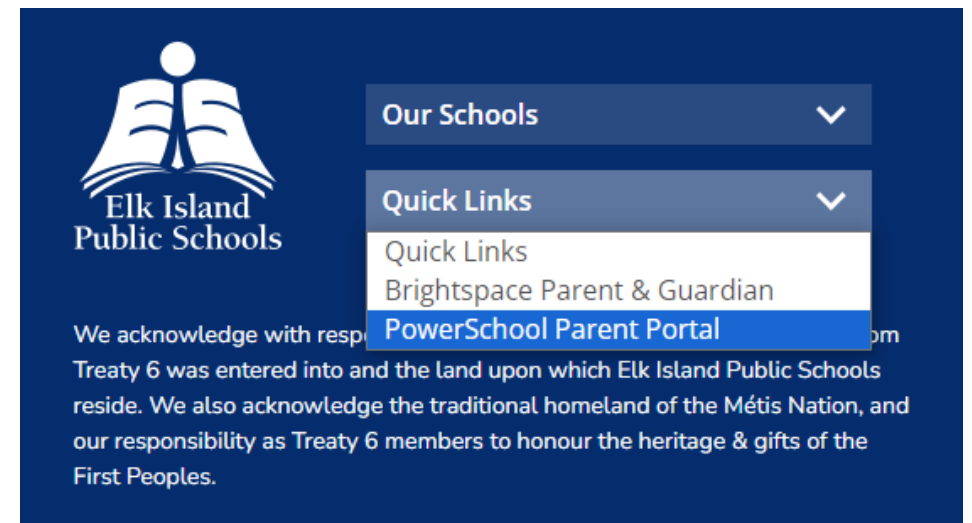
Learn more at  
[curriculum.learnalberta.ca/curriculum/en](https://curriculum.learnalberta.ca/curriculum/en)



# PowerSchool Parent Portal

- Online access to your child's progress report, attendance and school fees
- One Parent Portal account to link all children in the family together
- Your account follows each student as they move through the Division

Learn more at [eips.ca/parents/powerschool](https://eips.ca/parents/powerschool)





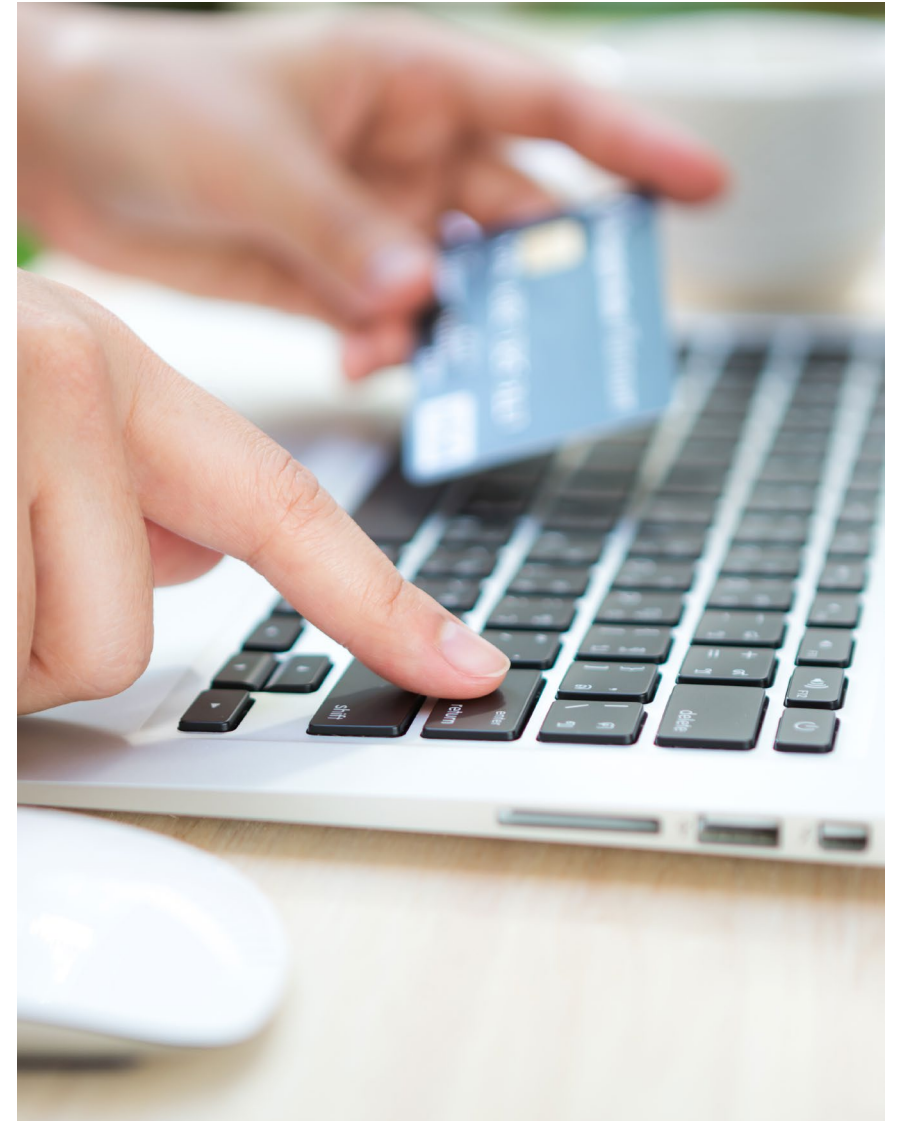
# School Fees

- Paid online through the PowerSchool Parent Portal
- Assessed at the start of the year
- Others may be added throughout the year
- Fee waiver policy

Learn more at:

[eips.ca/schools/fees](https://eips.ca/schools/fees)

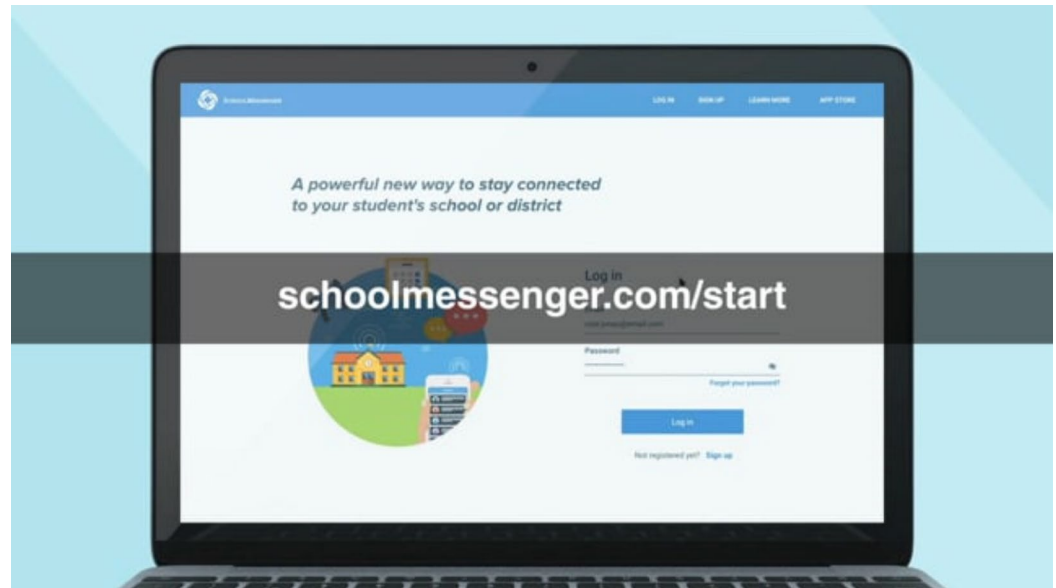
[eips.ca/schools/fees/waiver-of-fees](https://eips.ca/schools/fees/waiver-of-fees)



# SchoolMessenger

- EIPS uses the SchoolMessenger system for sending information to families by phone, email and text—including bus cancellations or delays, inclement weather, upcoming events, school newsletters, parental engagement opportunities, emergency notices and more.
- Families can manage their subscription preference through their SchoolMessenger account.
- Download the app to stay connected on the go.

Learn more at [eips.ca/contact/subscribe](https://eips.ca/contact/subscribe)





# Permission Click

- EIPS uses the online Permission Click platform for many school and Division forms.
- Forms are easily accessible and fillable from mobile devices. No log in required.
- Emails will come from Permission Click.
  - Add [notifications@permissionclick.com](mailto:notifications@permissionclick.com) to your safe-sender list to ensure required forms aren't mistakenly directed to your junk mail folder.

*Permission* **CLICK**



# Student Transportation

- Bus routes
- Bus passes
- Transportation fees
- Little Elk Island Adventure
- **First day of kindergarten busing:  
September 4**

Transportation fees are due June 30, 2025

Fees are paid online at [eips.ca/transportation/  
transportation-fees/student-transportation-online-  
payments](https://eips.ca/transportation/transportation-fees/student-transportation-online-payments)



# Student Transportation: Little Elk Island Adventure

Students and parents learn:

- How to be safe when around the bus
- What the Danger Zone is and where it is located
- How to board the bus and scan their bus pass
- How to sit properly on the school bus
- EIPS' Code of Conduct

Learn more at

[eips.ca/transportation/little-elk-island-adventure](https://eips.ca/transportation/little-elk-island-adventure)



## EIPS KINDERGARTEN CALENDAR 2025-26

■ No School for All Students and Staff  
○ Early Dismissal for Students  
– one hour early every Wednesday

☆ First Day of Class  
■ No School for Students  
– Professional Learning Day/Operational Day

**SCHEDULE A:**  
Mondays, Thursdays  
and select Wednesdays

**SCHEDULE B:**  
Tuesdays, Fridays  
and select Wednesdays

### Important Dates

|                |  |
|----------------|--|
| Aug 26         | Professional Learning Day                                    |
| Aug 27         | Operational Day  |
| Aug 28         | First Instructional Day Schedule A                           |
| Aug 29         | First Instructional Day Schedule B                           |
| Sept 1         | Labour Day – holiday   |
| Sept 4         | First Day of Kindergarten Busing                             |
| Sept 30        | National Day for Truth and Reconciliation – Division closure |
| Oct 3          | Professional Learning Day                                    |
| Oct 13         | Thanksgiving Day – holiday                                   |
| Nov 10 - 14    | November Break   |
| Nov 11         | Remembrance Day – holiday                                    |
| Nov 17         | Classes Resume   |
| Dec 22 - Jan 2 | Christmas Break  |
| Dec 25         | Christmas Day – holiday                                      |
| Jan 1          | New Year's Day – holiday                                     |
| Jan 5          | Classes Resume   |
| Jan 28         | Professional Learning Day                                    |
| Feb 5 - 6      | North Central Teachers' Convention                           |
| Feb 16         | Family Day – holiday   |
| Mar 6          | Professional Learning Day                                    |
| Mar 23 - 27    | Spring Break   |
| Mar 30         | Classes Resume   |
| Apr 3          | Good Friday – holiday  |
| Apr 6          | Easter Monday – Division closure                             |
| May 1          | Professional Learning Day                                    |
| May 18         | Victoria Day – holiday                                       |
| June 21        | National Indigenous Peoples Day                              |
| Jun 22         | Last Instructional Day Schedule A                            |
| Jun 23         | Last Instructional Day Schedule B                            |
| Jun 24         | Operational Day  |

| S  | M  | T  | W  | T  | F  | S  |
|----|----|----|----|----|----|----|
|    |    |    |    |    | 1  | 2  |
| 3  | 4  | 5  | 6  | 7  | 8  | 9  |
| 10 | 11 | 12 | 13 | 14 | 15 | 16 |
| 17 | 18 | 19 | 20 | 21 | 22 | 23 |
| 24 | 25 | 26 | 27 | 28 | 29 | 30 |
| 31 |    |    |    |    |    |    |

| S  | M  | T  | W  | T  | F  | S  |
|----|----|----|----|----|----|----|
|    |    |    | 1  | 2  | 3  | 4  |
| 5  | 6  | 7  | 8  | 9  | 10 | 11 |
| 12 | 13 | 14 | 15 | 16 | 17 | 18 |
| 19 | 20 | 21 | 22 | 23 | 24 | 25 |
| 26 | 27 | 28 | 29 | 30 | 31 |    |

| S  | M  | T  | W  | T  | F  | S  |
|----|----|----|----|----|----|----|
|    | 1  | 2  | 3  | 4  | 5  | 6  |
| 7  | 8  | 9  | 10 | 11 | 12 | 13 |
| 14 | 15 | 16 | 17 | 18 | 19 | 20 |
| 21 | 22 | 23 | 24 | 25 | 26 | 27 |
| 28 | 29 | 30 | 31 |    |    |    |

| S  | M  | T  | W  | T  | F  | S  |
|----|----|----|----|----|----|----|
| 1  | 2  | 3  | 4  | 5  | 6  | 7  |
| 8  | 9  | 10 | 11 | 12 | 13 | 14 |
| 15 | 16 | 17 | 18 | 19 | 20 | 21 |
| 22 | 23 | 24 | 25 | 26 | 27 | 28 |

| S  | M  | T  | W  | T  | F  | S  |
|----|----|----|----|----|----|----|
|    |    |    | 1  | 2  | 3  | 4  |
| 5  | 6  | 7  | 8  | 9  | 10 | 11 |
| 12 | 13 | 14 | 15 | 16 | 17 | 18 |
| 19 | 20 | 21 | 22 | 23 | 24 | 25 |
| 26 | 27 | 28 | 29 | 30 |    |    |

| S  | M  | T  | W  | T  | F  | S  |
|----|----|----|----|----|----|----|
|    | 1  | 2  | 3  | 4  | 5  | 6  |
| 7  | 8  | 9  | 10 | 11 | 12 | 13 |
| 14 | 15 | 16 | 17 | 18 | 19 | 20 |
| 21 | 22 | 23 | 24 | 25 | 26 | 27 |
| 28 | 29 | 30 |    |    |    |    |

| S  | M  | T  | W  | T  | F  | S  |
|----|----|----|----|----|----|----|
|    | 1  | 2  | 3  | 4  | 5  | 6  |
| 7  | 8  | 9  | 10 | 11 | 12 | 13 |
| 14 | 15 | 16 | 17 | 18 | 19 | 20 |
| 21 | 22 | 23 | 24 | 25 | 26 | 27 |
| 28 | 29 | 30 |    |    |    |    |

| S  | M  | T  | W  | T  | F  | S  |
|----|----|----|----|----|----|----|
|    |    |    |    |    |    | 1  |
| 2  | 3  | 4  | 5  | 6  | 7  | 8  |
| 9  | 10 | 11 | 12 | 13 | 14 | 15 |
| 16 | 17 | 18 | 19 | 20 | 21 | 22 |
| 23 | 24 | 25 | 26 | 27 | 28 | 29 |
| 30 |    |    |    |    |    |    |

| S  | M  | T  | W  | T  | F  | S  |
|----|----|----|----|----|----|----|
|    |    |    |    | 1  | 2  | 3  |
| 4  | 5  | 6  | 7  | 8  | 9  | 10 |
| 11 | 12 | 13 | 14 | 15 | 16 | 17 |
| 18 | 19 | 20 | 21 | 22 | 23 | 24 |
| 25 | 26 | 27 | 28 | 29 | 30 | 31 |

| S  | M  | T  | W  | T  | F  | S  |
|----|----|----|----|----|----|----|
| 1  | 2  | 3  | 4  | 5  | 6  | 7  |
| 8  | 9  | 10 | 11 | 12 | 13 | 14 |
| 15 | 16 | 17 | 18 | 19 | 20 | 21 |
| 22 | 23 | 24 | 25 | 26 | 27 | 28 |
| 29 | 30 | 31 |    |    |    |    |

| S  | M  | T  | W  | T  | F  | S  |
|----|----|----|----|----|----|----|
|    |    |    |    |    | 1  | 2  |
| 3  | 4  | 5  | 6  | 7  | 8  | 9  |
| 10 | 11 | 12 | 13 | 14 | 15 | 16 |
| 17 | 18 | 19 | 20 | 21 | 22 | 23 |
| 24 | 25 | 26 | 27 | 28 | 29 | 30 |
| 31 |    |    |    |    |    |    |

| S  | M  | T  | W  | T  | F  | S  |
|----|----|----|----|----|----|----|
|    |    |    |    | 1  | 2  | 3  |
| 4  | 5  | 6  | 7  | 8  | 9  | 10 |
| 11 | 12 | 13 | 14 | 15 | 16 | 17 |
| 18 | 19 | 20 | 21 | 22 | 23 | 24 |
| 25 | 26 | 27 | 28 | 29 | 30 | 31 |

475  
instructional  
hours  
per year

# EIPS offers full-day programming on alternating days.

- Mondays, Thursdays and **select** Wednesdays, or
- Tuesdays, Fridays and **select** Wednesdays
- Students are dismissed one hour earlier **every** Wednesday

Find the Division calendar at  
[eips.ca/calendar](https://eips.ca/calendar)

Visit the calendar page on the school's website for school specific dates and events

# Staggered Entry

- To introduce new kindergarteners to school, Fultonvale offers staggered entry at the start of the school year.
- Children come in smaller groups for part days to learn a bit about the classroom, the school and daily routines.
- 2025-26 staggered entry dates:
  - Thursday, August 28<sup>th</sup> and Wednesday, September 3 (early dismissal day)
- Your 2025-26 staggered entry date will be communicated prior to the start of the school year
- **First day of kindergarten busing: September 4**





# School Supplies

- School supply lists are available on our school website - <https://www.fultonvale.ca/about/school-supplies>



Tools for School is a program from the United Way that provides backpacks filled with school supplies to students in kindergarten to Grade 12 whose families have limited resources. The supplies provided may not be everything that's on your child's supply list, but it's a start.

If you would benefit from the Tools for School program, contact the school office.



## Events and Field Trips

- This year, the kindergarten classes had multiple field trips. We visited Safety City and went to Smeltzer House. In addition to this, we host in-school activities, take nature walks, and participate in school-wide events.





# Parent Involvement

- [School Council](#)
- [Fundraising Society - FSAC](#)
- Parent volunteers
- Parent Teacher Conference



# Speech-Language Pathology (SLP) Services

- SLPs in kindergarten provide the following services, as needed:
  - Informal classroom-based speech and language screening
  - Speech and language assessment to identify need for further services
  - Followup intervention or consultation for children transitioning from preschool programs
  - Direct intervention and consultation based on identified needs
  - Parent consultation



# Occupational Therapy (OT) Services

- OTs informally screen students' participation in the classroom setting and provide universal strategies to the classroom staff.
- Service is primarily consultative, providing resources to classroom staff and parents when needed. Students with mild to moderate needs will be primarily served through these general classroom suggestions.
- OTs may have more direct involvement with children who have significant needs in the areas of self-care, regulation and motor skills.



# Specialized Supports Informed Consent

## School and Program Preference

Enrolling Grade required i

Kindergarten



Review [Kindergarten Specialized Supports Informed Consent](#)

☐ I have read and understand the Kindergarten Specialized Supports Informed Consent. required

Please choose from the two options below regarding Kindergarten supports screening for your child. required

☐ Accept Screening

☐ Decline Screening



# Preparing for Kindergarten



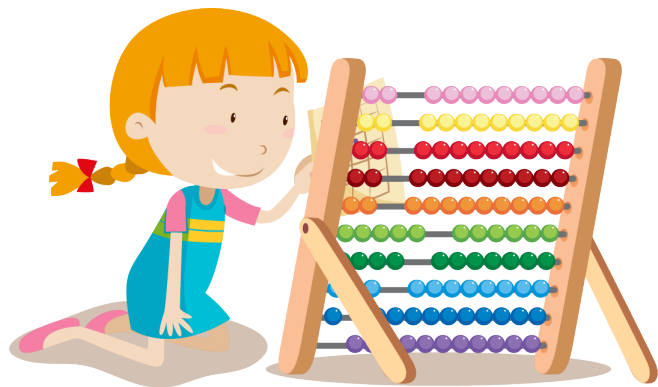
Communication and literacy



Motor skills



Social-emotional development



Numeracy



Self-help skills



Eye See, Eye Learn

Learn more at [eips.ca/programs-services/early-learning/kindergarten/preparing-for-kindergarten](https://eips.ca/programs-services/early-learning/kindergarten/preparing-for-kindergarten)



# Preparing for Kindergarten: A Team Effort!

- **Preparing for Kindergarten email series:**  
EIPS will send a series of emails with fun activities to help you prepare your child for their kindergarten year.
  - Look for these emails and a special contest in May and June.
- **Welcome to Kindergarten questionnaire:**  
School and kindergarten teams are also busy preparing for your child. Families will receive a questionnaire where they can share important information about their child.
  - If you haven't yet completed the form, please do so the end of June.
  - <https://forms.office.com/r/9GzZVAY7wk>

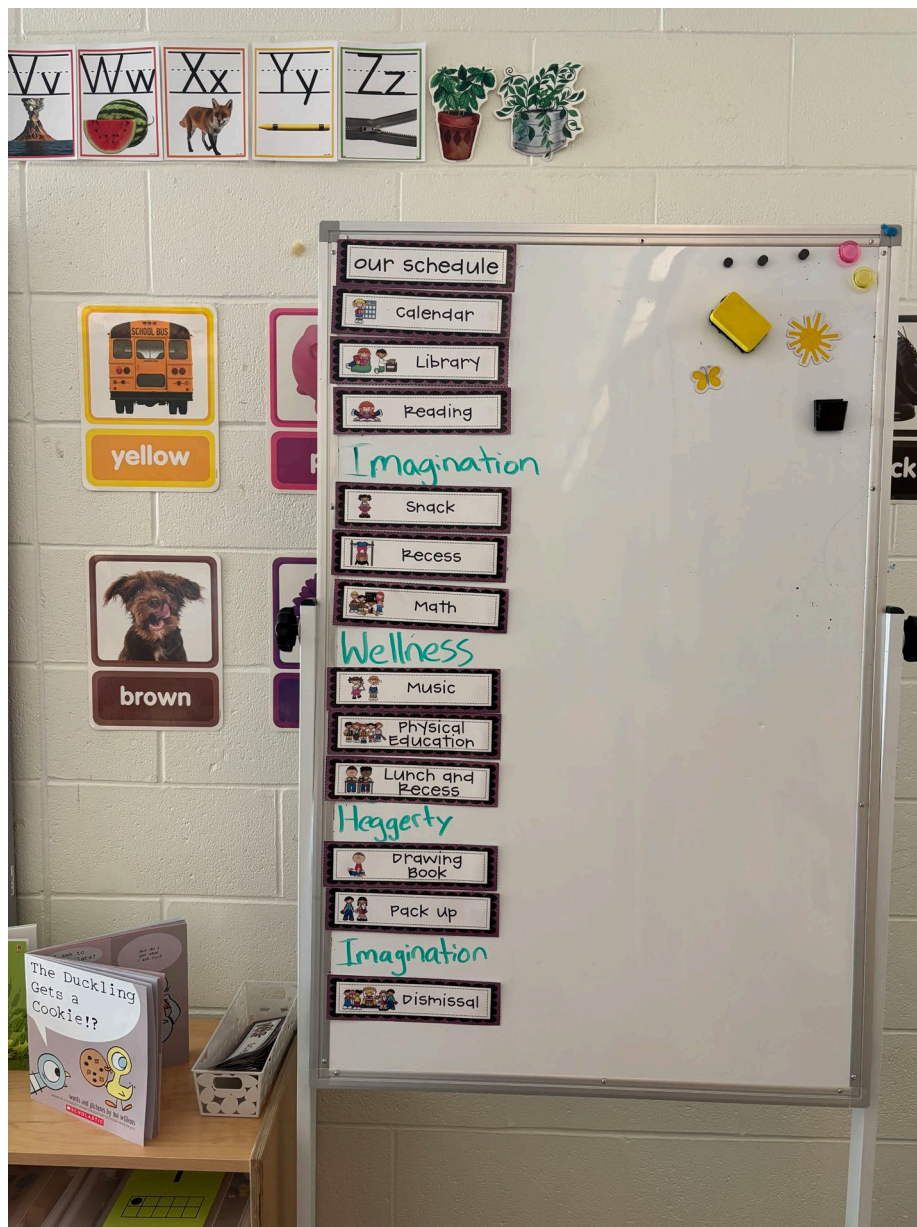
# Typical Kindergarten Day

- [Student Attendance](#)
- [Bell schedule](#)
- Early Dismissal Wednesdays
- Parent drop off and pick up





# LOCKERS



# DAILY SCHEDULE & CALENDAR



# SNACKS & LUNCH



# CENTERS & IMAGINATIVE PLAY



# CENTERS & IMAGINATIVE PLAY



# Gym





# LIBRARY

# Family and Community Services



- **Visit:** [strathcona.ca/fcs](https://strathcona.ca/fcs)
- **Phone:** 780-464-4044
- **Location:** 401 Festival Lane, Sherwood Park (Community Centre, Second Floor)
- **Office Hours:**
  - Monday, Wednesday and Friday  
8:30 a.m. to 4:30 p.m.
  - Tuesday and Thursday  
8:30 a.m. to 8 p.m.





# Helpful Links

## EIPS

- [eips.ca/kindergarten](https://eips.ca/kindergarten)
- Facebook:  
[facebook.com/ElkIslandPublicSchools](https://facebook.com/ElkIslandPublicSchools)
- Instagram:  
[instagram.com/elkislandpublicschools](https://instagram.com/elkislandpublicschools)

## FULTONVALE

- <https://www.fultonvale.ca/>

## ALBERTA EDUCATION

- Alberta Education curriculum:  
[curriculum.learnalberta.ca/curriculum/en](https://curriculum.learnalberta.ca/curriculum/en)



Questions?

